

A top-down view of a grey, speckled floor. In the upper left, there are two round wooden coasters. In the lower left, a green apple sits on a small wooden block. In the lower right, a red toy car with a colorful, abstract design is connected by a red rope to a white, coral-like object. A black rectangular box is positioned in the center of the image, containing text.

**MEISTER**

# Design flooring

MeisterDesign

**THE VINYL  
FLOORING  
WITHOUT  
VINYL**







# **MeisterDesign – The vinyl flooring without vinyl.**

With all the  
advantages  
of vinyl.

Without its  
disadvantages.



Robust. Easy to maintain.  
Ecologically sound.  
For use anywhere.  
These are what make  
good flooring.  
The design flooring MeisterDesign  
has all these properties –  
and much more besides.

Different areas of the house make different demands on the floor covering. In the bathroom and entrance area, it has to withstand humidity, in the kitchen the outlines of the old tiles underneath may not be visible, whereas in the bedroom and living room the flooring should be particularly comfortable and pleasant to walk on barefoot. Not a problem for MeisterDesign!

The design flooring is available in four different product structures - and thus provides the optimum solution for any application case. The whole spectrum is available - from waterproof to extra-comfortable. This gives you the freedom to select your favourite decor to match the respective purpose. Simply genius, don't you think? We certainly think so!

Yet MeisterDesign is not only impressive in different living environments. Its high resilience and wear class 23 | 33 make the design flooring a good choice for commercial areas too.



MeisterDesign | Golden oak 6999 | Wood effect





## And why without vinyl?

---

What many people do not know: » Vinyl « comes from the term PVC: Polyvinylchloride. This is not a bad thing per se, but it can contain plasticisers which can be harmful to the health and environment. Not to mention the smell of the vapours. Which is why the MeisterDesign flooring does entirely without any vinyl or PVC. Only with its advantages. Because these are undisputed: ease of maintenance, extreme resistance to wear, sturdiness and waterproofness.



# One for everything: 4 variants for every application

A thin floor easy to use for renovation work which does not reveal the outlines of the old tiles underneath? A light resilient floor with a cork insulating layer? Or the waterproof no hassle variant? The choice is yours with MeisterDesign design flooring!!



## **MeisterDesign.comfort**

The comfortable feel-good floor with the extra layer of cork.



## **MeisterDesign.flex**

The slim design flooring with low structural height.



## **MeisterDesign.life**

The straightforward all-rounder for clicking.



## **MeisterDesign.pro**

The extra-thin professional flooring for full-surface bonding.



Plank

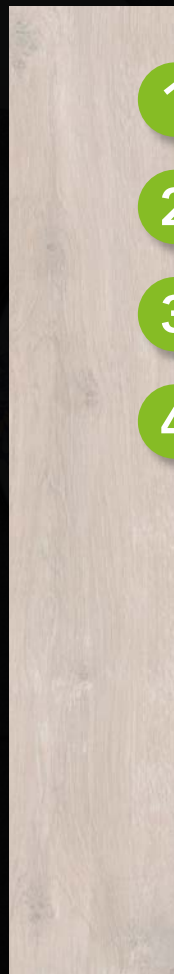


1

2

3

Short plank



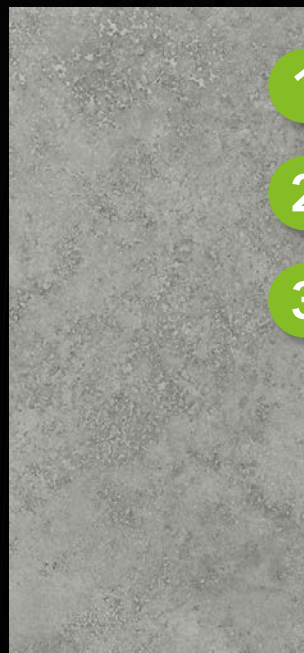
1

2

3

4

Tile



1

2

3







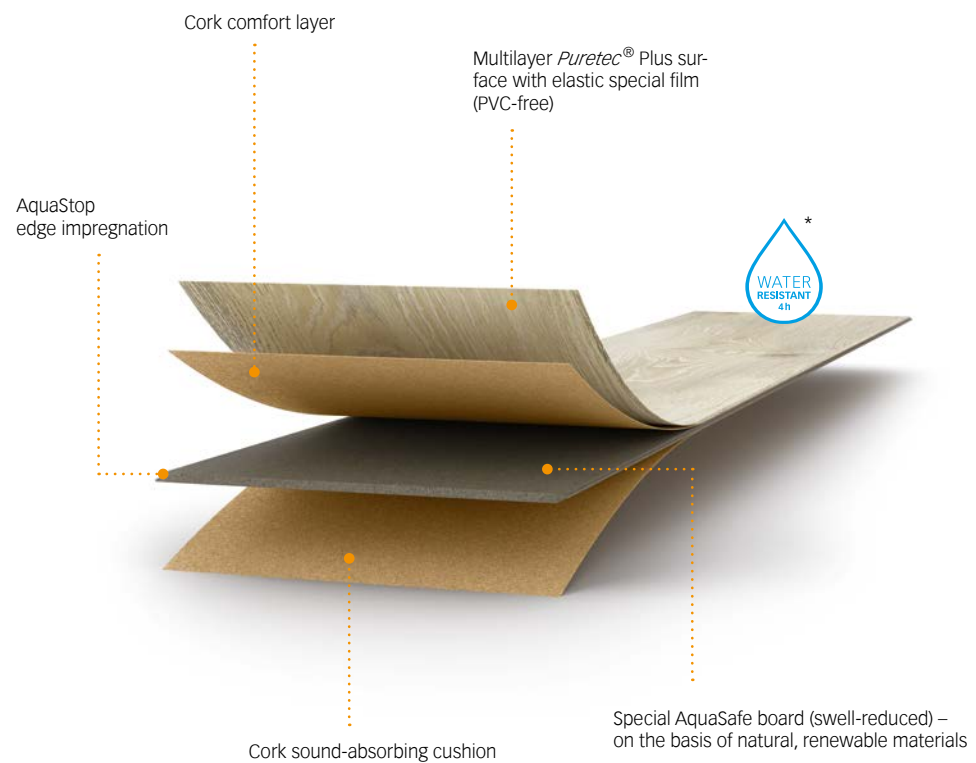
# 1 MeisterDesign. comfort

The comfortable feel-good floor with the extra layer of cork.

» Kind to joints

» Particularly quiet

With its double layer of cork, the design flooring MeisterDesign. comfort achieves top combined footfall and impact sound values and does not need an additional insulating layer. Because it is so quiet, kind to joints, warm underfoot and comfortable, it is just perfect for all living rooms and bedrooms, but particularly for children's rooms:



\* Can be installed in humid rooms like e.g. bathrooms. This does not include outdoor areas and wet rooms, e.g. saunas, shower cubicles, steam rooms and rooms with a floor drain.

## MeisterDesign. comfort

Wear class 23 33	Suitable for humid rooms	MEISTER warranty* 25 years	Effective measurement:
All-round micro-bevel	4 hours water-resistant	in living areas   5 years in	2052 × 219 mm (DL 600 S)
With 1 mm cork sound-absorbing cushion	Special AquaSafe board	commercial areas	1287 × 220 mm (DD 600 S)
	Puretec® Plus surface	Thickness: 9 mm	853 × 395 mm (DB 600 S)
	Click system: MasterclicPlus		

\* Warranty according to the MeisterWerke warranty conditions at [www.meister.com](http://www.meister.com)



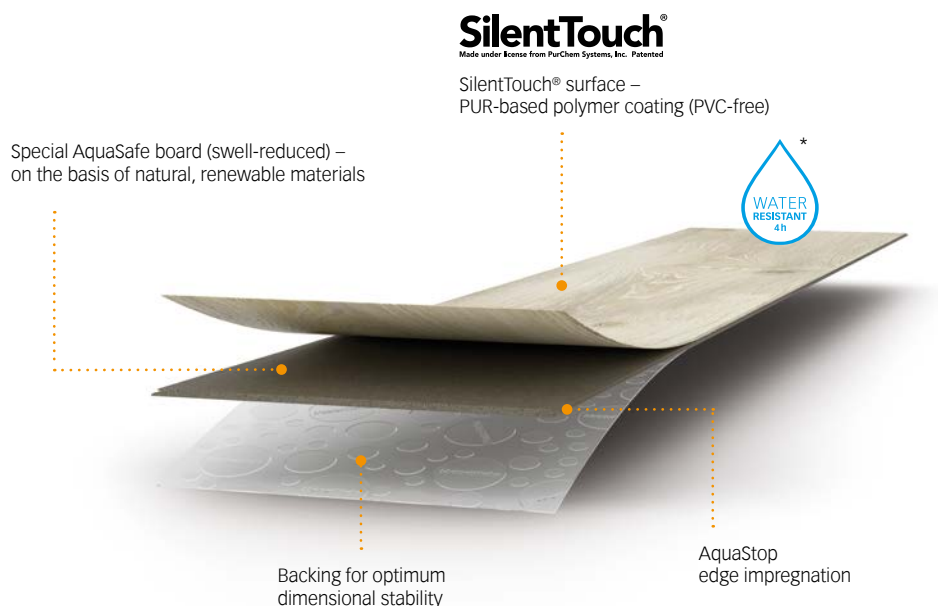
## 2 MeisterDesign. flex

The slim design flooring with low structural height.

» **Renovation-friendly**

» **Flexible**

MeisterDesign. flex makes renovation work child's play. The subfloor does not have to be prepared elaborately either, quite the opposite: old subfloors such as tiles can simply stay where they are, because they will not show through the planks with sturdy special AquaSafe board. MeisterDesign. flex adapts elegantly to any unevenness in the floor. MeisterDesign. flex comes up trumps in many living situations, particularly in kitchens and living rooms which need to be renovated quickly and easily.



\* Can be installed in humid rooms like e.g. bathrooms. This does not include outdoor areas and wet rooms, e.g. saunas, shower cubicles, steam rooms and rooms with a floor drain.

### MeisterDesign. flex

Wear class 23 33	MEISTER warranty* 25 years
All-round micro-bevel	in living areas   5 years in
Suitable for humid rooms	commercial areas
4 hours water-resistant	Thickness: 5 mm
Special AquaSafe board	Effective measurement:
SilentTouch® surface	2055 × 216 mm (DL 400)
Click system: Multiclic	1290 × 216 mm (DD 400)
	858 × 399 mm (DB 400)

### SilentTouch® technology

The surface of the MeisterDesign. flex design flooring is produced using innovative, patented SilentTouch® technology, making it exceptionally elastic, quiet, durable and easy to care for.

\* Warranty according to the MeisterWerke warranty conditions at [www.meister.com](http://www.meister.com)











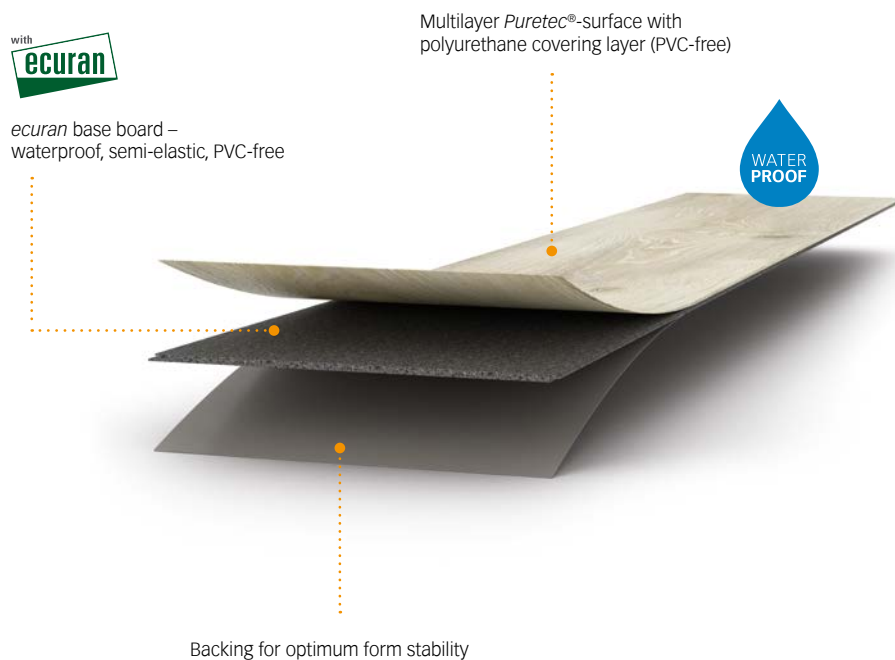
### 3 MeisterDesign.life®

The straightforward all-rounder for clicking.

» **Waterproof**

» **Elastic**

Dirt and water? No problem whatsoever for the waterproof design flooring MeisterDesign.life. Even strong sunshine doesn't do any harm unlike with vinyl floors. In principle the flooring, which is quiet to walk on, is suitable for bathrooms and all living areas because of rugged surface, but it is especially suitable for rooms with direct access to the outdoors and for conservatories. By the way: you can install MeisterDesign.life floating on an area of up to 15 x 15 m – making it ideal for open-plan living spaces too.



#### MeisterDesign.life®

Wear class 23 33	MEISTER warranty* 25 years
All-round micro-bevel	in living areas   5 years in commercial areas
Waterproof	Thickness: 5 mm
Suitable for humid rooms	Effective measurement:
ecuran-waterproof and PVC-free base board	1830 × 214 mm (DL 800)
Puretec® surface	1290 × 214 mm (DD 800)
Click system: Maxiclic	858 × 391 mm (DB 800)

#### ecuran

*ecuran* is the high-performance composite material for demanding flooring solutions. It is based on organic polyurethane which is made up to a large extent of vegetable oils such as rapeseed or castor oil and naturally occurring mineral components such as chalk. *ecuran* is non-harmful to health because it does without plasticisers, solvents and chlorine.

\* Warranty according to the MeisterWerke warranty conditions at [www.meister.com](http://www.meister.com)



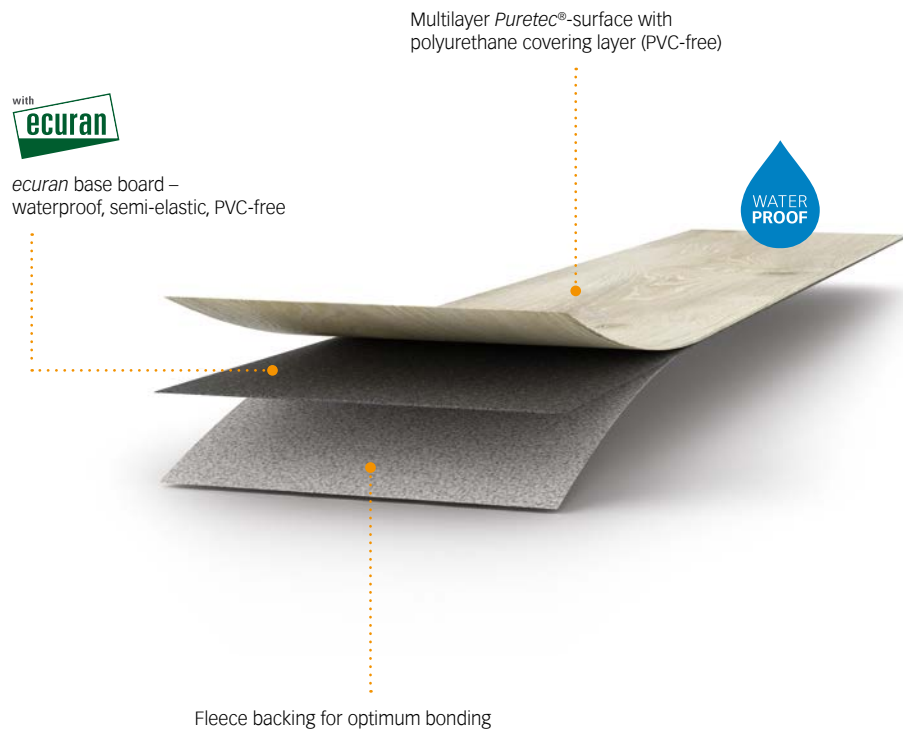
## 4 MeisterDesign. pro

The extra-thin professional flooring for full-surface bonding.

» **Waterproof**

» **Impact-resistant**

At only 2 mm thick, MeisterDesign. pro is first choice when the structural height has to be kept to a minimum. Following professional sub-floor preparation, it is the perfect (and waterproof) option for the bathroom, hallway and commercial applications such as shops or restaurants.



### MeisterDesign. pro

Wear class 23 33	MEISTER-warranty* 25 years
All-round micro-bevel	in living areas   5 years in
Waterproof	commercial areas
Suitable for humid rooms	Thickness: 2 mm
ecuran – waterproof and	Effective measurement:
PVC-free base board	1295 × 219 mm (DD 200)
Puretec® surface	
For full-surface bonding	

### ecuran

ecuran is the high-performance composite material for demanding flooring solutions. It is based on organic polyurethane which is made up to a large extent of vegetable oils such as rapeseed or castor oil and naturally occurring mineral components such as chalk. ecuran is non-harmful to health because it does without plasticisers, solvents and chlorine.

\* Warranty according to the MeisterWerke warranty conditions at [www.meister.com](http://www.meister.com)





**CHECK  
GARMENT  
CARE LABELS  
FOR RECOMMENDED  
WASH TEMPERATURE**

**#95°**  
White cotton and linen with  
no special finishes.

**#60°**  
Cotton, linen and rayon items  
which are both colour fast and  
have no special surface finishes.

**#40°**  
Cotton linen and rayon where  
colours are fast at 40° but not at 60°.

**#30°**  
Silk and printed acetate fabrics  
with colours not fast at 40°.

**hand wash**  
Wool, silk, acetate and acrylic  
materials sensitive to mechanical  
action.







A photograph of a modern interior space featuring a large glass door with a black frame, set into a red brick wall. The ceiling is made of exposed wooden beams. To the left, a round wooden table with two chairs is visible, one of which has a patterned cushion. A black metal frame is visible in the foreground. The text "Decor overview" is overlaid in white on a dark rectangular background.

## Decor overview



## Wood decors (plank\*)

---



Page 25

**Arctic white oak 6995** | Wood effect<sup>1</sup>

Page 26

**Nordland oak 6839** | Wood effect

Page 27

**Greige fjord oak 6837** | Wood effect

Page 28

**Pure castle oak 6840** | Wood effect

Page 30

**Light farm oak 6831** | Wood effect

Page 31

**Caramel oak 6953** | Wood effect<sup>1</sup>

Page 32

**Natural farmer's oak 6832** | Wood effect

Page 34

**Greige oak 6959** | Wood effect<sup>1</sup>





Page 35

Light cracked oak 6956 | Wood effect¹



Page 36

Light castle oak 6841 | Wood effect



Page 37

Natural castle oak 6836 | Wood effect



Page 38

Natural English oak 6952 | Wood effect¹



Page 40

Cognac English oak 6949 | Wood effect¹



Page 41

Vintage ash 6950 | Wood effect¹



Page 42

Clay grey old wood oak 6986 | Wood effect¹



Page 43

Dark castle oak 6842 | Wood effect



## Wood decors (short plank)

---



Page 45

**Polar oak 6994** | Wood effect

Page 46

**Arctic white oak 6995** | Wood effect

Page 47

**Lakeside oak 6990** | Wood effect

Page 48

**Desert oak 6998** | Wood effect

Page 50

**Natural English oak 6983** | Wood effect

Page 51

**Greige oak 6959** | Wood effect

Page 52

**Grey wild oak 6977** | Wood effect

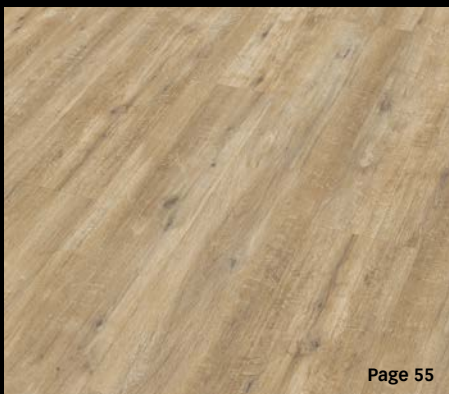
Page 53

**Pure English oak 6985** | Wood effect





Page 54

**Grey fjord oak 6847** | Wood effect

Page 55

**Light fjord oak 6846** | Wood effect

Page 56

**Light field oak 6843** | Wood effect

Page 58

**Natural field oak 6844** | Wood effect

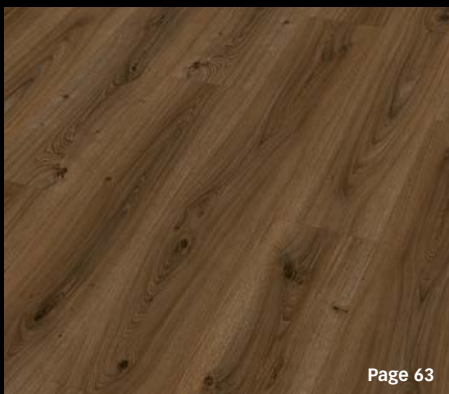
Page 59

**Cabin board 6991** | Wood effect

Page 60

**Golden oak 6999** | Wood effect

Page 62

**Clay grey old wood oak 6986** | Wood effect

Page 63

**Dark crown oak 6848** | Wood effect







## Stone decors (tile\*)

---



Concrete 7321 | Imitation



Light terrazzo 6859 | Imitation



Cosmopolitan stone 7320 | Decor



Dark terrazzo 6858 | Imitation



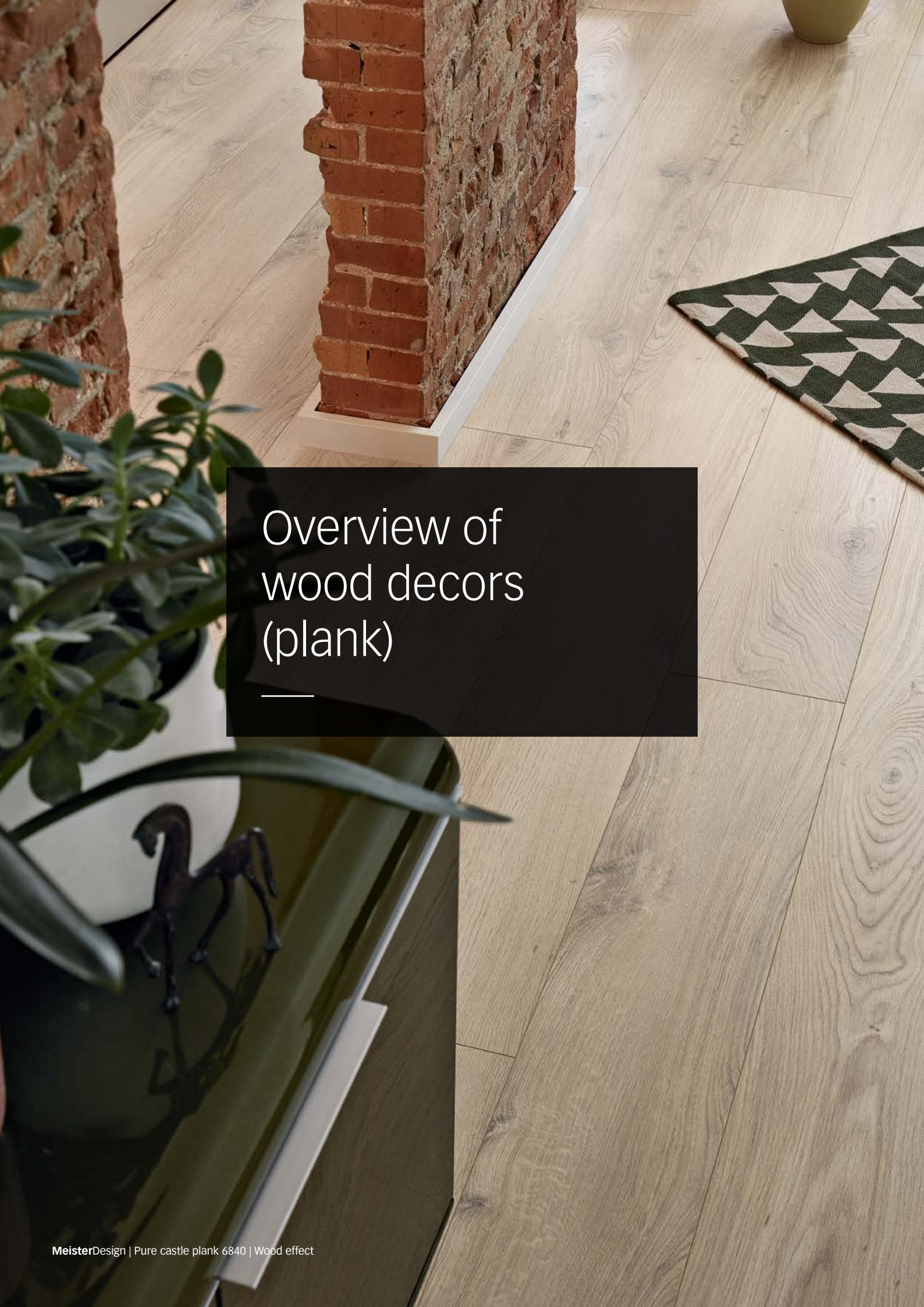
Copper iron 6857 | Decor



Black lava 7323 | Decor

\* Tiles not available as pro.





# Overview of wood decors (plank)

---

















































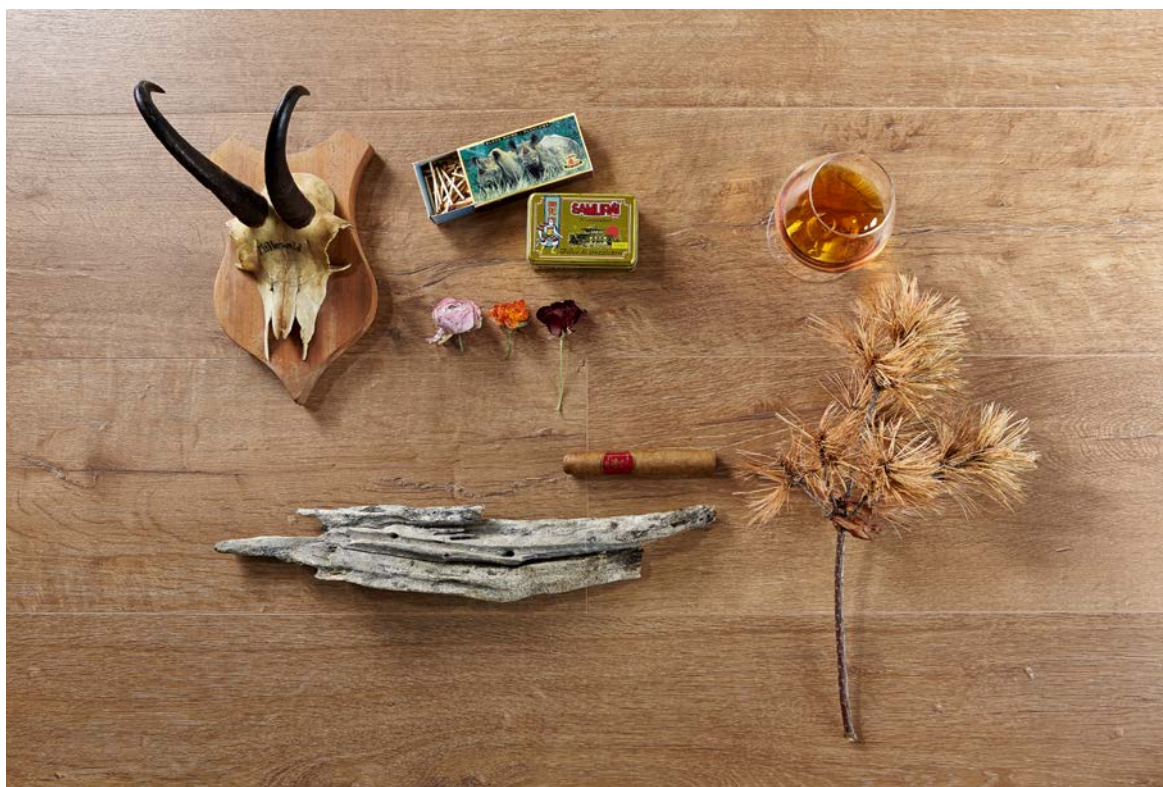






















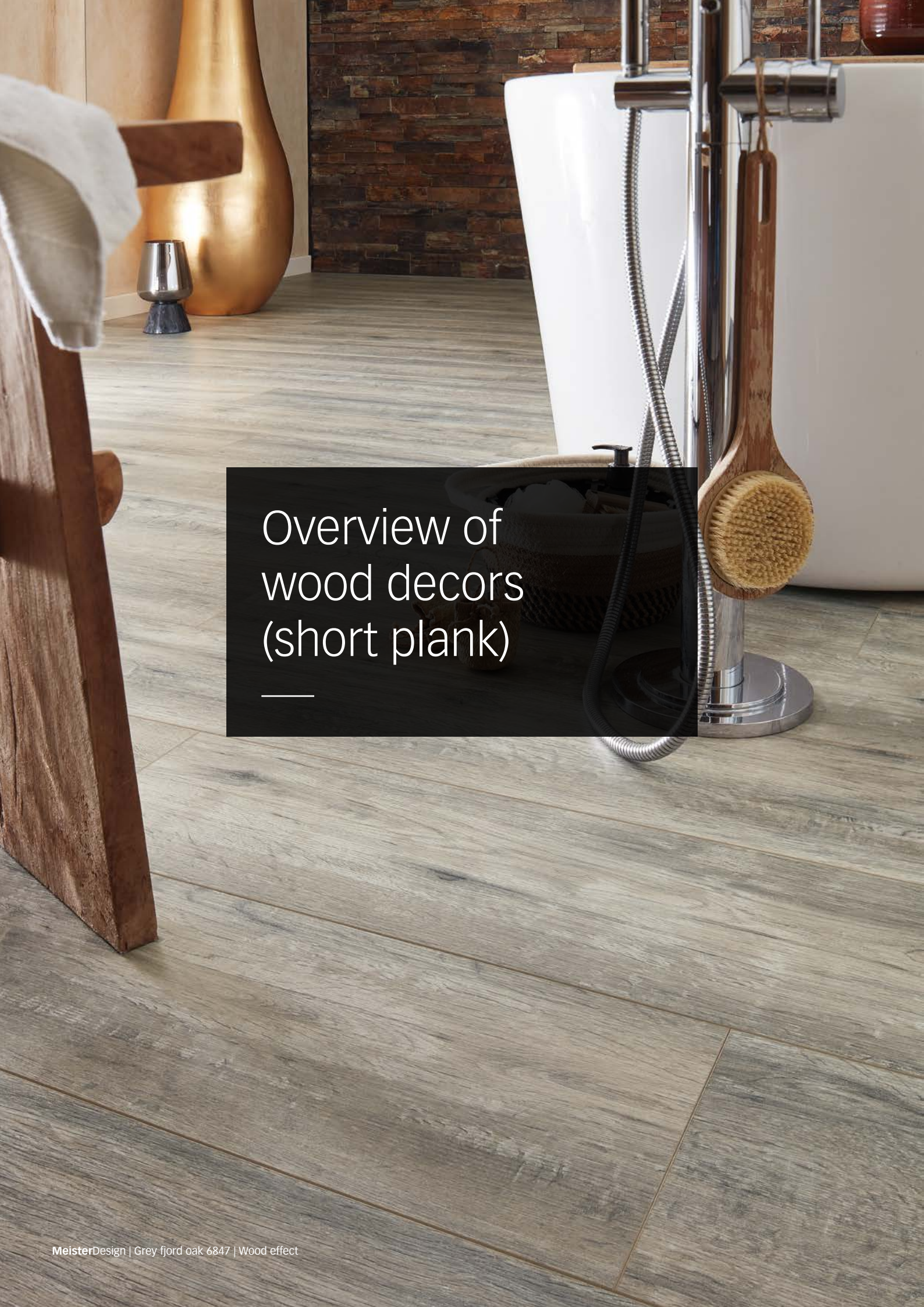






MeisterDesign | Dark castle oak 6842 | Wood effect

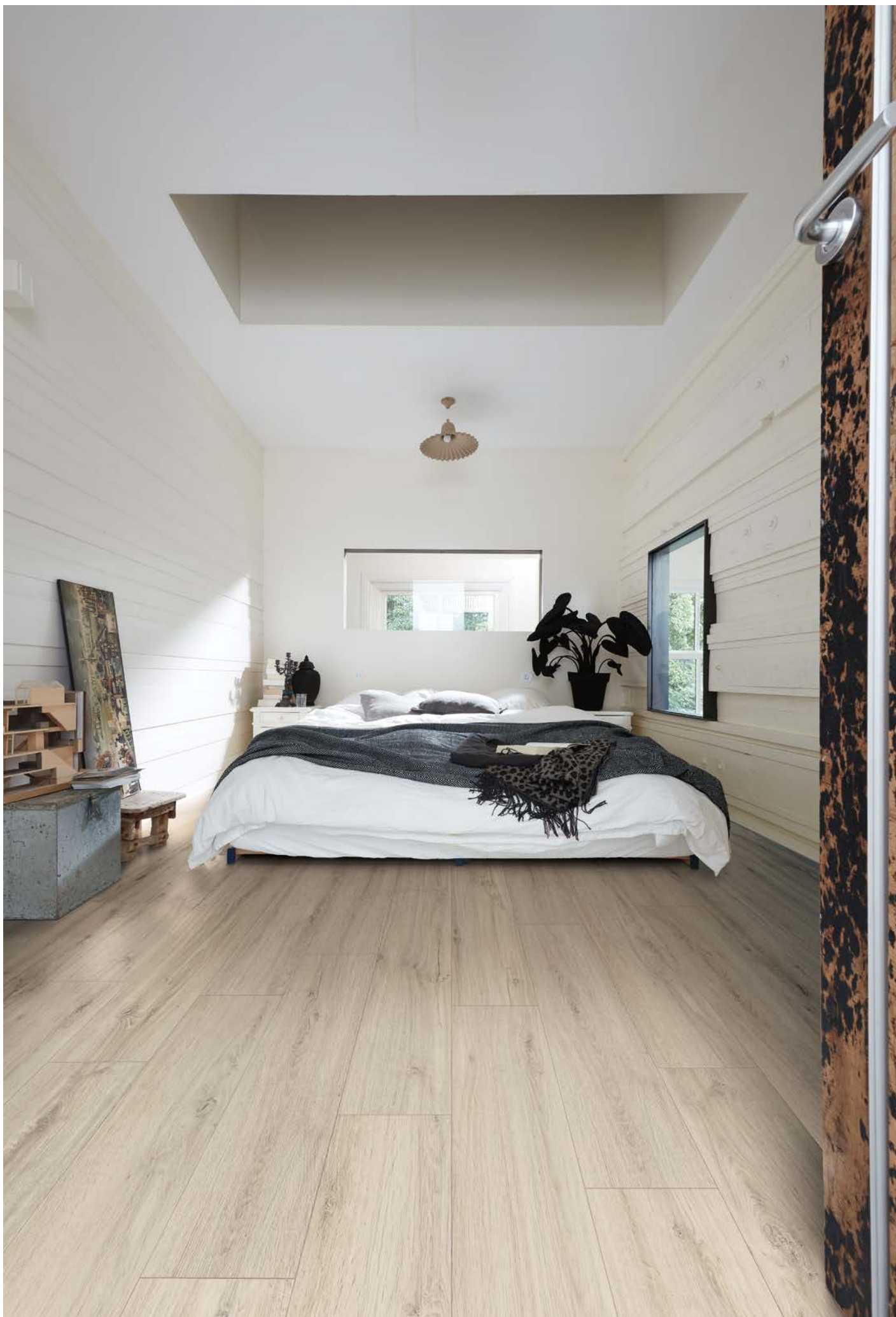




# Overview of wood decors (short plank)

---

































MeisterDesign | Grey wild oak 6977 | Wood effect













MeisterDesign | Light fjord oak 6846 | Wood effect

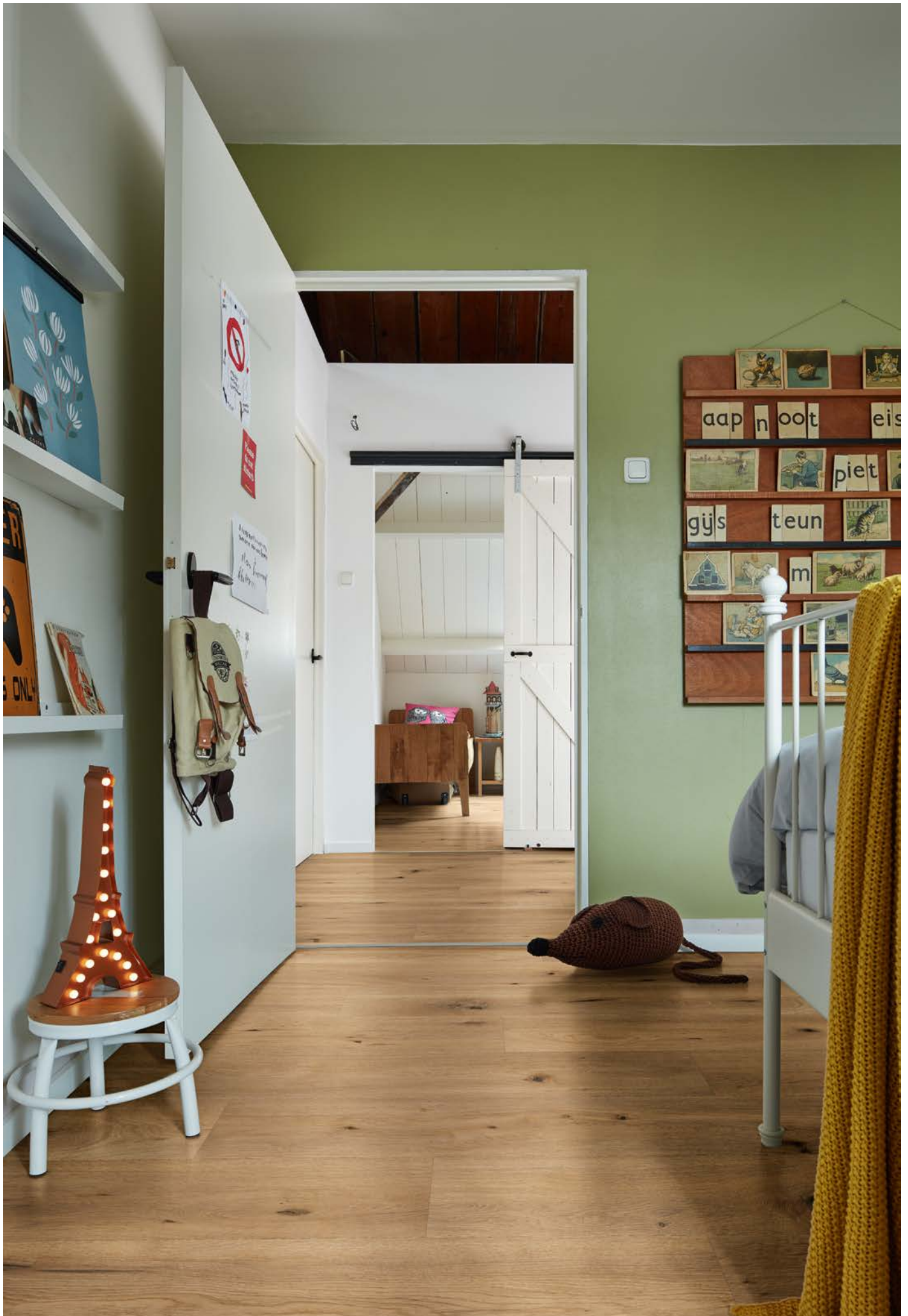








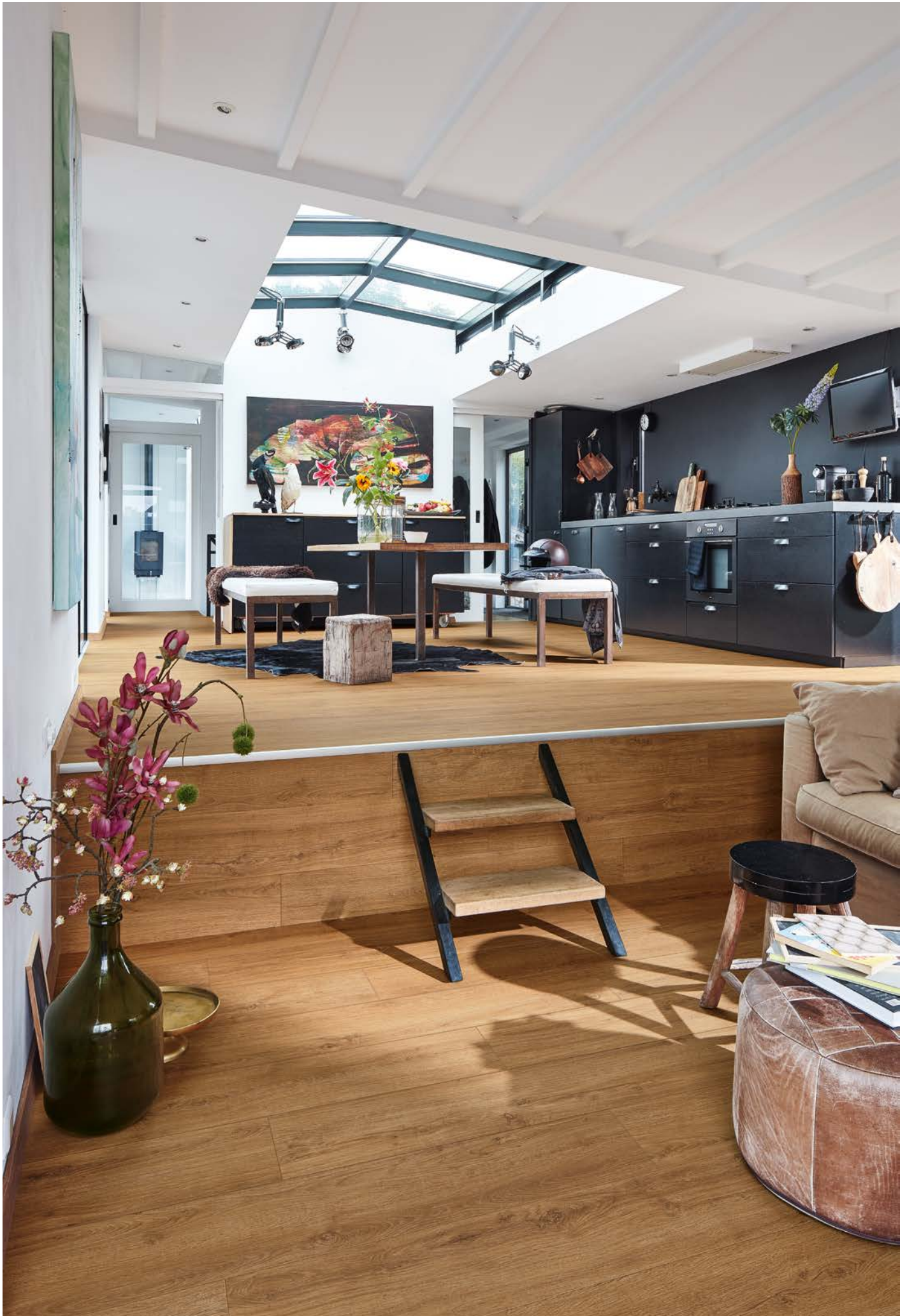





























# Overview of stone decors (tile)









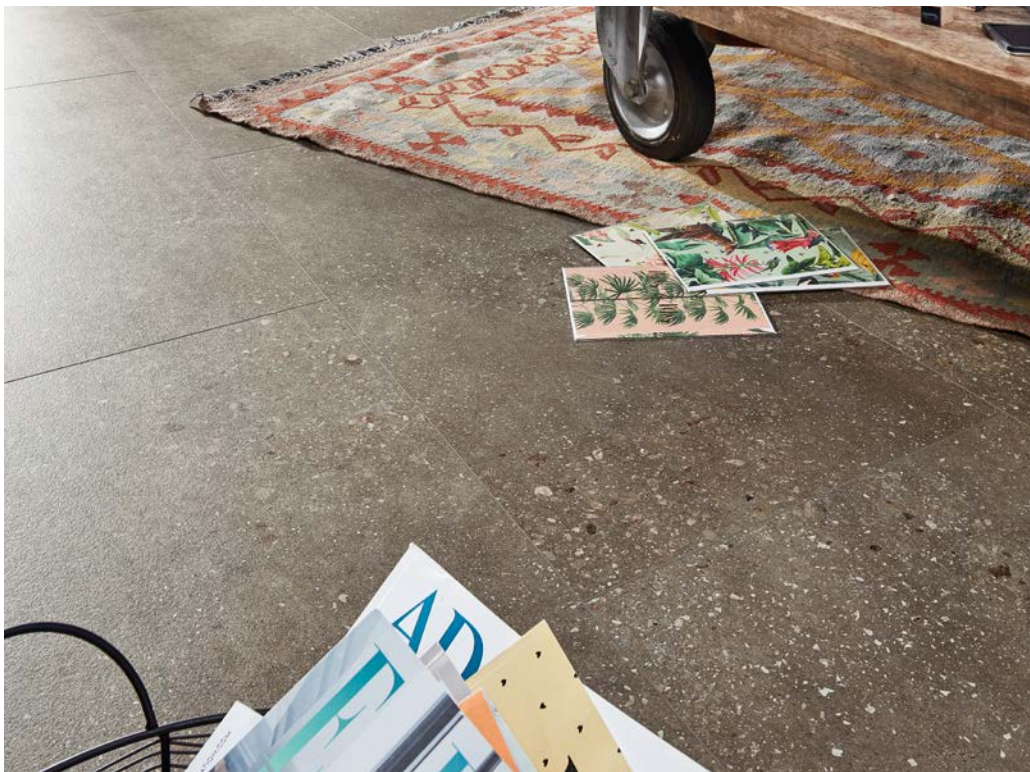
















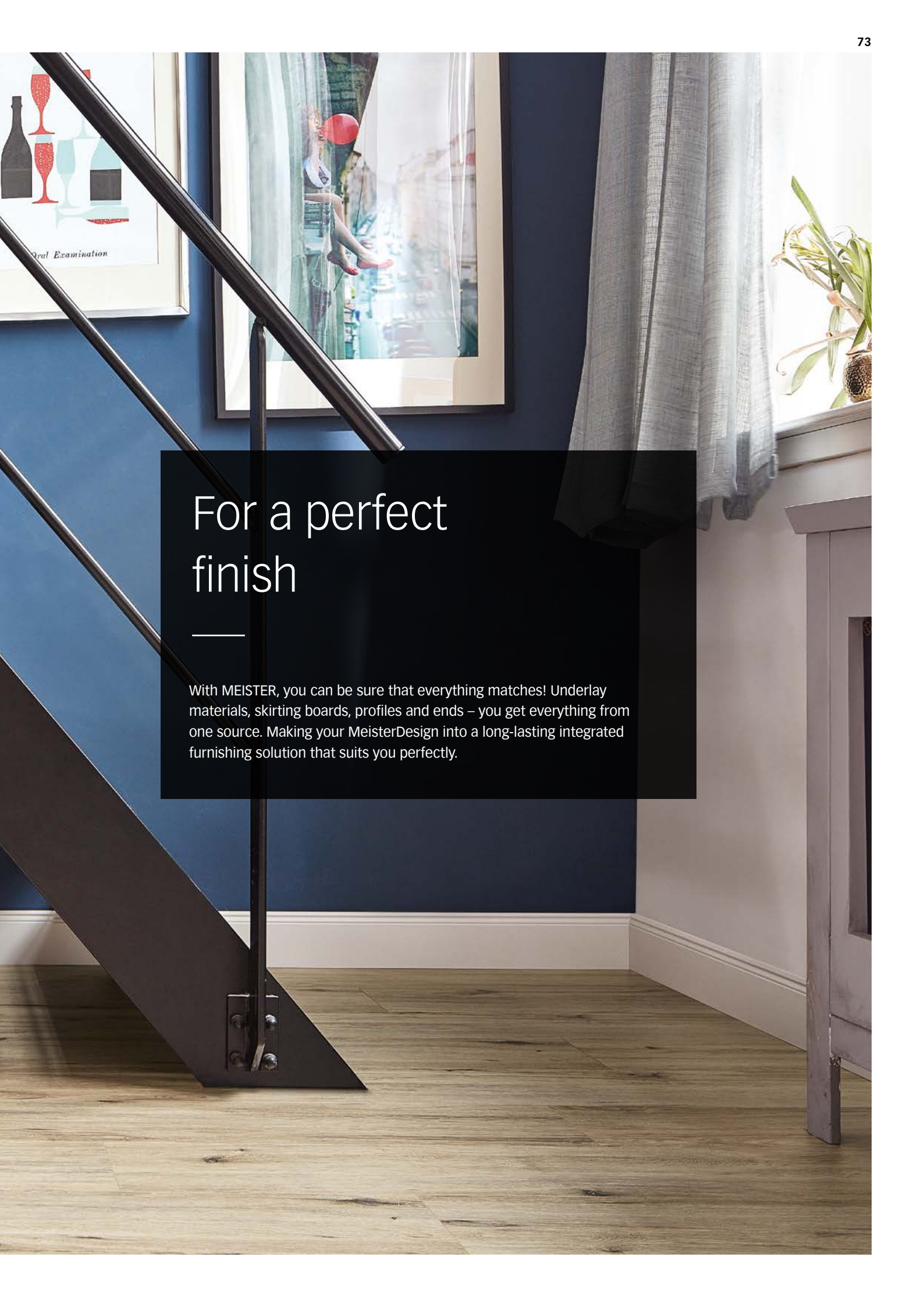












## For a perfect finish

---

With MEISTER, you can be sure that everything matches! Underlay materials, skirting boards, profiles and ends – you get everything from one source. Making your MeisterDesign into a long-lasting integrated furnishing solution that suits you perfectly.





Skirting board 19 PK profile | Plain white gloss 324 (decorative film)

## Open for all styles – white skirting boards.

What does white have that other colours don't? The openness to adapt to any style and the capability of supplementing all other colours without effort. For this reason, our skirting boards with white decor film add that little something to every interior design style and can be combined excellently with all flooring types. The large selection of different profile shapes opens up the opportunity to set both classic and modern highlights, depending on individual tastes.

## Worry-free all round – the waterproof skirting boards.

A waterproof floor offers you a worry-free all-round package in terms of durability and ease of maintenance – water-related swelling and warping are completely excluded. To ensure the whole floor system lasts, choose the waterproof skirting boards »Aqua« in white or stainless steel (decor film) to finish against the wall. This way, you will always be on the safe side.



Skirting board 20 PK Aqua profile | Plain white gloss 324 (decorative film)



## A harmonious appearance – with floor-matched skirting boards.

You are right to want pure harmony in your own four walls, starting with the base. With skirting boards matching the shade or decor of the respective floor, you will easily achieve your goal.

The balanced interaction between flooring and skirting board is rounded off by the decor being continued from skirting board to skirting board. This is how good perfect harmony looks.



Skirting board 20 PK profile | Natural English oak 6983 | Wood effect



Skirting board 9 PK profile | White paintable 2222 (individual colour)

## Colourful and with character – skirting boards you can paint yourself.

In the same colour as the wall? To match your furniture? Or something completely different? It's up to you: design your skirting boards exactly according to your own wishes! Covered with a paintable film, these skirting boards are ideally prepared for the implementation of your personal ideas. Let your imagination run wild!



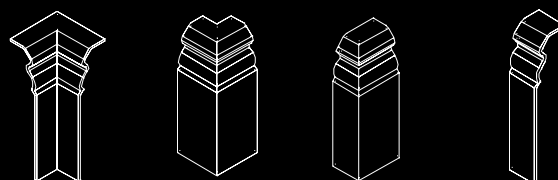
## Beautifully versatile: overview of skirting board profiles



## 'How to': Moulding accessories

To ensure that even difficult corners and edges fit perfectly, MEISTER offers internal corners, external corners, end caps and connection pieces to match many mouldings. You can find the whole range at [www.meister.com](http://www.meister.com). Here, you will also find an overview of the different profiles available for aligning adjacent floor coverings or French windows, suitable radiator rosettes, door

stoppers and our recommended cleaning and protective care agents.









## The complete system counts: Which underlay for which MeisterDesign variant?

Without good underlay, it's not a good floor. The underlay has a great influence on the durability of the flooring and is an important component of the functioning of the entire system as far as day-to-day wear is concerned. Premium quality flooring may suffer damage when laid on poor quality underlay. Whereas high quality underlay ensures long enjoyment of your flooring, by preventing damage to the click connections, for example, with the ideal pressure stability. Excessively soft underlay can have a significantly negative effect on fold-down connections, for example. When choosing underlay, both the floor to be installed and the subsurface are important. No matter whether for concrete floors, wooden floorboards, drywall constructions or existing flooring, such as tiles or stone: with a comprehensive underlay range, MEISTER ensures that every MEISTER floor can be laid on the appropriate subsurface.

	Silence Compact	SilenceGrip	Silence 25 DB with integrated vapour barrier	Silence 20	Silence 15 DB with integrated vapour barrier	PE-film
MeisterDesign. comfort	insulating underlay integrated					for mineral subsurfaces
MeisterDesign. flex	–	–	✓	✓	✓	for mineral subsurfaces
MeisterDesign. life	✓	✓	–	–	–	–
MeisterDesign. pro	full-surface bonding					



## The MEISTER underlay materials:

Thanks to the special PUR mineral blend, MEISTER-Silence 25 DB, MEISTER-Silence 20 or MEISTER-Silence 15 DB are the ideal insulating underlay for effective room and footfall noise reduction. The high self-weight of the products also has a positive effect on the sound-absorbing properties. In the case of Silence 25 DB and 15 DB the vapour barrier is already integrated, which means the laying of an additional PE-film is no longer necessary on mineral substrates.

The insulating underlays MEISTER-SilenceGrip (with anti-slip effect) and MEISTER-Silence Compact are 1.5 mm thick underlays made of a PUR mineral blend and were especially developed for floor coverings with a solid, elastic and synthetic core with click system. The underlays fulfil the increased requirements of the technical bulletin issued by the MMFA (Multilayer Modular Flooring Association) for Class 2 floor coverings.

All MEISTER underlay materials can be installed on underfloor heating. They comply with the technical bulletin provided by the European Producers of Laminate Flooring (EPLF) based on CEN/TS 16354. The Silence products also meet the requirements of the technical bulletin issued by the Multilayer Modular Flooring Association (MMFA) »Underlay Materials under Multilayer Modular Floor Coverings (MMF) – Test Standards and Performance Indicators« for Class 1 (with HDF-core).

- 
1. MEISTER-SilenceGrip  
MEISTER-Silence Compact | 1.5 mm
  2. MEISTER-Silence 25 DB  
with integrated vapour barrier | 3 mm
  3. MEISTER-Silence 20 | 2.5 mm
  4. MEISTER-Silence 15 DB  
with integrated vapour barrier | 2 mm
  5. PE-film (vapour barrier)





# MeisterDesign at a glance

## MeisterDesign. comfort

## MeisterDesign. flex

	DL 600 S	DD 600 S	DB 600 S	DL 400	DD 400	DB 400
Thickness	9 mm			5 mm		
Effective measurement	2052 × 219 mm	1287 × 220 mm	853 × 395 mm	2055 × 216 mm	1290 × 216 mm	858 × 399 mm
Base board	Special AquaSafe board   swell-reduced			Special AquaSafe board   swell-reduced		
Surface	Multilayer Puretec® Plus surface			SilentTouch®- surface		
Click system	Masterclik Plus			Multiclic		
Joint	All-round micro-bevel			All-round micro-bevel		
Suitable for humid rooms	✓ (4 hours water-resistant)			✓ (4 hours water-resistant)		
Wear class	23 33			23 33		
Suitable for water-based underfloor heating systems with thermal resistance	yes – 0.09 m² K/W with MEISTER PE-film			yes – 0.05 m² K/W with MEISTER-Silence 15 DB		
Type of installation	floating installation			floating installation		
Max. installation surface without expansion joints for floating installation	100 m² max. 10 × 10 m			100 m² max. 10 × 10 m		
Warranty living area   commercial area	25 years   5 years			25 years   5 years		
Fire protection class	Bfl-s1   hardly flammable			Cfl-s1   hardly flammable		
Antistatic ≤ 2 KV	–			–		
Non-slip level	R 9			R 9		
Suitable for conservatories	with some reservations			with some reservations		



[www.blauer-engel.de/uz176](http://www.blauer-engel.de/uz176)

MeisterDesign. comfort  
MeisterDesign. flex



[www.blauer-engel.de/uz120](http://www.blauer-engel.de/uz120)

MeisterDesign. life  
MeisterDesign. pro



MeisterDesign. comfort  
MeisterDesign. flex





## MeisterDesign. life

## MeisterDesign. pro

DL 800	DD 800	DB 800	DD 200
5 mm			2 mm
1830 × 214 mm	1290 × 214 mm	858 × 391 mm	1295 × 219 mm
ecuran   waterproof and PVC-free			ecuran   waterproof and PVC-free
Multilayer Puretec® surface			Multilayer Puretec® surface
Maxiclic			–
All-round micro-bevel			All-round micro-bevel
✓			✓
23 33			23 33
yes – 0.01 m² K/W 0,02 m² K/W with MEISTER-SilenceGrip			yes – 0,01 m² K/W
floating installation   full-surface bonding possible			full-surface bonding
225 m² max. 15 × 15 m			no restriction
25 years   5 years			25 years   5 years
C <sub>fl</sub> -s1   hardly flammable			C <sub>fl</sub> -s1   hardly flammable
✓			✓
R 9			R 9
✓			✓



MeisterDesign. comfort  
MeisterDesign. flex



MeisterDesign. life  
MeisterDesign. pro



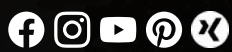












© 2020 by MeisterWerke Schulte GmbH  
 Colours and textures may vary due to printing conditions.  
 We reserve the right to make changes. No responsibility is assumed for errors.

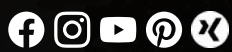
**MEISTER – a trademark of MeisterWerke Schulte GmbH**  
 Johannes-Schulte-Allee 5 | 59602 Rüthen-Meiste | GERMANY  
 Phone + 49 2952 816-0 | Fax + 49 2952 816-66 | [www.meister.com](http://www.meister.com)

GB

968008013A01 01|20







© 2020 by MeisterWerke Schulte GmbH  
 Colours and textures may vary due to printing conditions.  
 We reserve the right to make changes. No responsibility is assumed for errors.

**MEISTER – a trademark of MeisterWerke Schulte GmbH**  
 Johannes-Schulte-Allee 5 | 59602 Rüthen-Meiste | GERMANY  
 Phone + 49 2952 816-0 | Fax + 49 2952 816-66 | [www.meister.com](http://www.meister.com)

GB

968008013A01 01|20









A top-down view of a grey, speckled floor. In the upper left, there are two round wooden coasters. In the lower left, a green apple sits on a small wooden block. In the lower right, a red toy car with a colorful, abstract design is connected by a red rope to a white, coral-like object. A black rectangular box is centered on the floor, containing text.

**MEISTER**

**Design  
flooring**  
MeisterDesign

**THE VINYL  
FLOORING  
WITHOUT  
VINYL**











